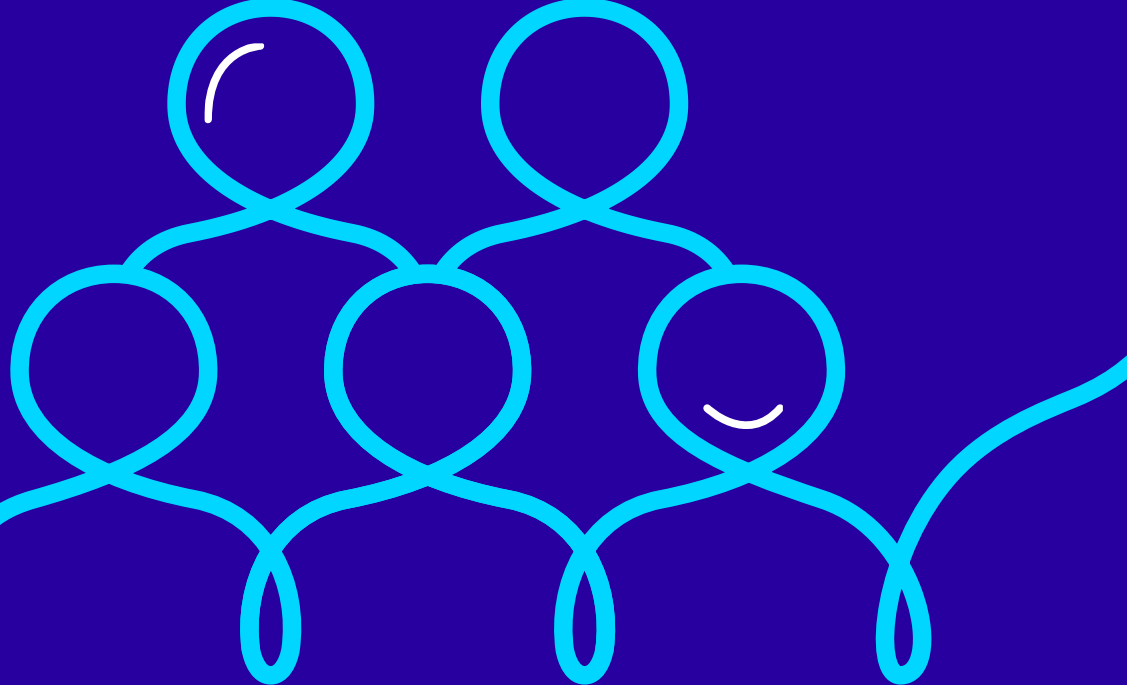


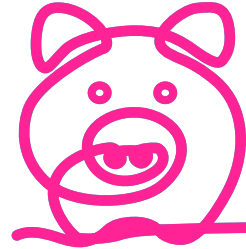
People's Partnership and FMB

Rachael Barber

Date: 06/07/2023



Building on our success



Over **6 million** members

- 1 in 5 UK workers has a pot with The People's



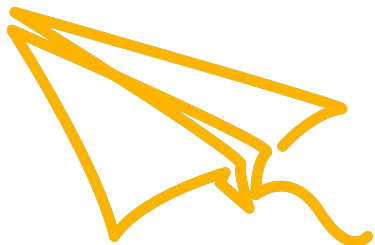
Around **100,000** employers

- One of the largest master trust workplace pensions in the UK



£20bn under management

- Savers trust us to grow and protect £20bn of their money

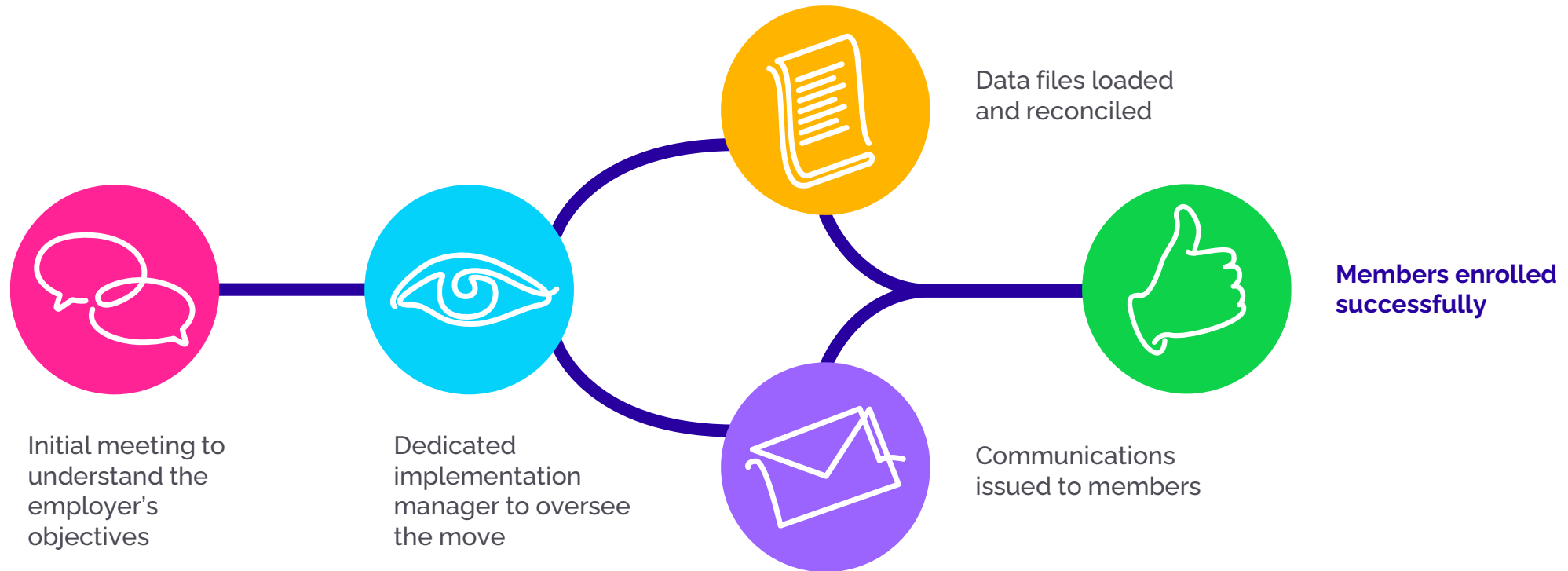


£300 million new contributions per month

- Helping our members on their way to a better retirement

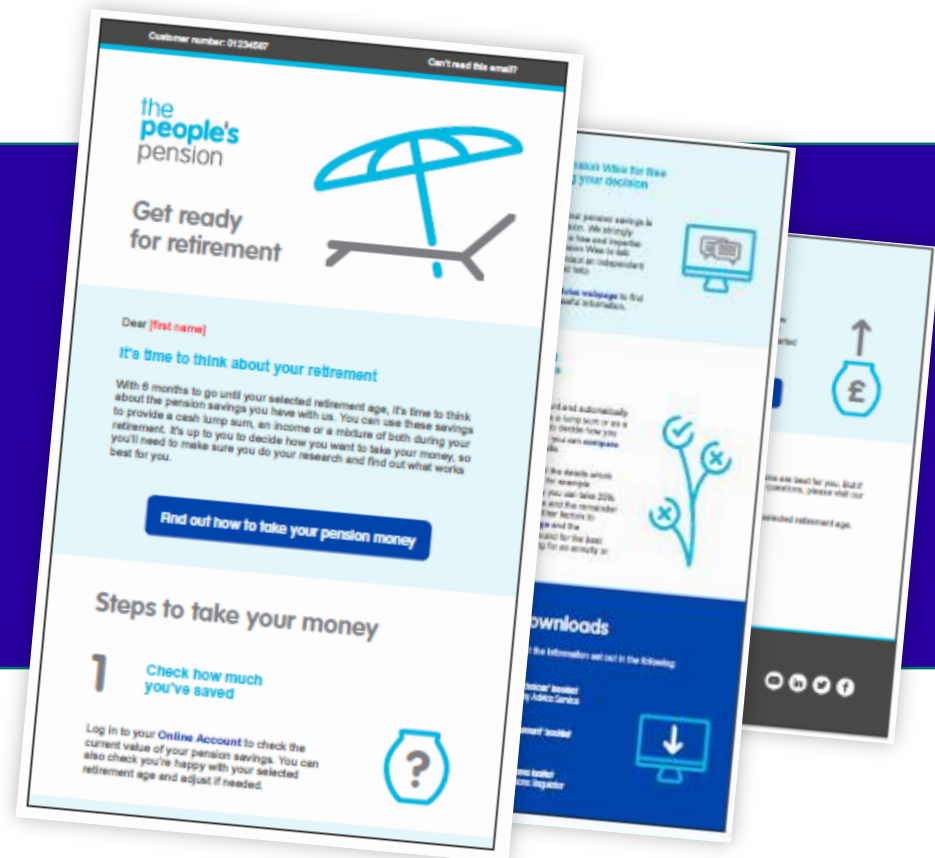
Getting your scheme started

Making things clear and simple



Clear communications

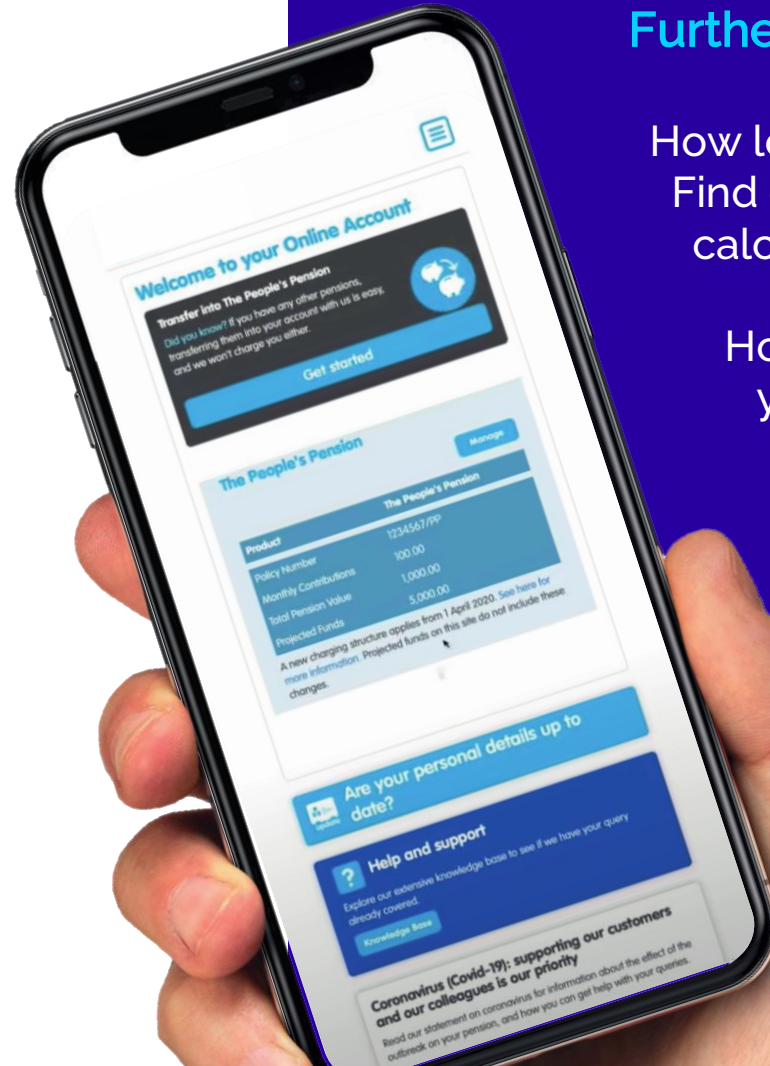
Making things clear and simple



Online savings management

With our Online Account members can:

- Update their personal details
- Take their money online
- Obtain valuations
- Make fund choices
- Select their retirement age
- **Nominate beneficiaries**
- View their contributions
- View annual statements
- **Transfer in existing pots**
- View our 'How to...' animations



Further tools online to help them plan:

How long will your pension need to last? Find out by using our life expectancy calculator.

How much do you need to save into your pension? Find out by using our future budget calculator.

Next steps

Switching providers

<https://thepeoplespension.co.uk/switching-pension-providers/>

Any questions



01293 586643



rrm@peoplespartnership.co.uk



www.thepeoplespension.co.uk

The information contained within this presentation is private and confidential and cannot be copied, reproduced or used in any way without express permission from People's Partnership.

© People's Partnership Holdings Limited

XX TPP 1896.0123